

FCPF Technical Advisory Panel

**Dominican Republic
RPP-Revised Version:
November 8th, 2013**

**TAP Comments &
Recommendations**

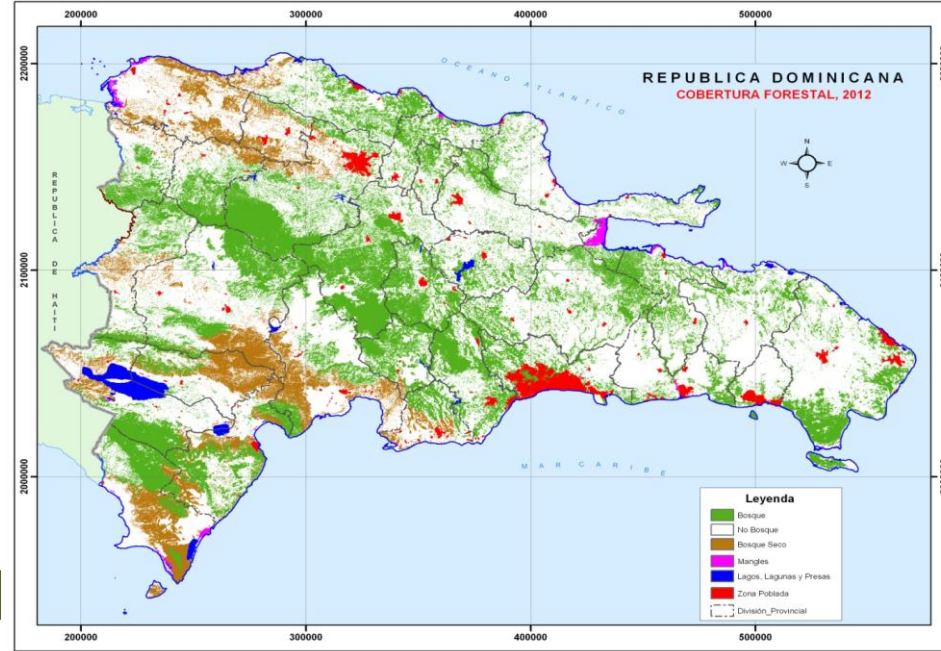
December, 2013
16th FCPF Participants
Committee

For the DR TAP team
Gisela Ulloa and Ben de Jong



Dominican Republic Statistics

- Population: 10,28 million
- Poverty: 40.4 %
- Indigenous population: tbd



- Forests cover : 28.9 % or 1.3 million ha
- Deforestation Rate:- 12.2 % 2012 (15 Y)
- Forest Sector: Agriculture: 5.8% GDP
Industry: 29.4%
Services: 64.7% (2012 est.)

Strengths & Challenges

Strengths:

- The RPP and REDD+ early discussion in DR is extensive and has started since 2012

Challenges:

- A participatory approach for REDD+ strategy development requires a solid conflict and grievance resolution mechanism for its success. More work is required in this area.
 - The social and environmental Impact assessment requires more description.
 - The fact that for DR there are no IPs in its territory and the claims submitted to the FCPF by IPs groups from DR require a clear proposal on how this situation will be dealt with for a successful REDD+ implementation
- 58% of the components reached the standard**

Standard	Informal R-PP Review September 10th, 2013	Informal R-PP Review November, 2013
1a. National Readiness Management Arrangements	Largely Met	Largely Met
1b. Information Sharing and Stakeholder Dialogue	Met	Met
1c. Consultation and Participation Process	Largely Met	Largely Met
2a. Land Use, Forest Law, Policy and Governance	Largely Met	Largely Met
2b. REDD+ Strategy Options	Largely Met	Largely Met
2c. Implementation Framework	Largely Met	Met
2d. Social & Environmental Impacts during Preparation and Implementation	Largely Met	Largely Met
3. Reference Level	Largely Met	Met
4a. Monitoring – Emissions and Removals	Largely Met	Met
4b. Other Multiple Benefits, Impacts and Governance	Largely Met	Met
5. Schedule and Budget	Largely Met	Met
6. Program Monitoring & Evaluation Framework	Met	Met

Areas needing further work

1.a- 1.b (Largely Met)

- **The grievance and conflict resolution mechanism needs to be better described by including the discussion already taken place and potential courses of action for its design and implementation.**
- **Describe the process and procedures to address grievances and recommendations from stakeholders.**
- **The REDD+ process requires full and effective stakeholder participation, specifically from IPs and vulnerable groups.**
 - **The DR R-PP should lay out clearly the process to be followed to ensure such participation, including how IP claims will be dealt with.**
- **Dominican Republic should carefully read the advice from the Indigenous Peoples TAP expert as suggested during the TAP-Government conference call held in October, as a way forward to be presented in the R-PP.**

Areas needing further work

2.a LM

- Describe how the policies, decisions, and institutions have influenced the attitudes and interactions of stakeholders in relation with land use trends and deforestation and degradation drivers.
- Compare the successes and failures in implementing policies for addressing deforestation and forest degradation, contrasting command and control vs. other policies, and their impacts on forest governance and on the trends shown in different tables.
- Include information and linkages to National Land Management plan discussion

Areas needing further work

2.b LM

- Describe the introduction of natural gas as a substitute for the use of fuel wood and how can be considered as a possible source of national leakage in terms of net GHG emissions, and how this will be attended during the readiness stage
- Organize each option or set of options by driver including if possible government area responsible of that specific set/option.

Areas needing further work

2.d LM

- The R-PP can be further reinforced by adding a concise description of the process that will be used to carry out the SESA, institutions involved, roles and responsibilities, and outputs to be produced.
- The R-PP can be further strengthened by including social and environmental issues that have already been identified in the consultation process.
- The document should also describe the social and environmental review process that will be used for sub-national projects.
- Describe the country system in place for environmental and social impact assessment if available
- Define GAP between both WB/ common approach requirements and country system
- Define a program of work for all elements above

Final Remarks

- **A solid grievance mechanism in line with the the discussion and consultation process in place is needed.**
- **A statement on how the Ips claims already submmited will be dealt with under the REDD+ process**
- **SESA requieres more elaboration**

Thanks